



SITE LIGHTING

3.01 PORTABLE WORKLIGHTS

3.02 TELESCOPIC WORKLIGHTS

3.03 ENERGY SAVING TELESCOPIC WORKLIGHTS / FESTOON

3.04 HAND / INSPECTION LAMPS



Site Lighting

The PHASE site lighting offer represents a compact range of products put together to meet the majority of site illumination requirements all available from a single source of supply. The range includes floodlights, telescopic worklights, handlamps and festoon light strings.

The range also includes exciting, innovative new lines which includes a low energy family of products and a heavy duty telescoping worklight in its own carry case, the 'Mega'.

Again the products include special features such as the 2 in 1 telescopic worklights, where a portable stand is included as well as the tripod to give extra value to the contractor and weatherproof IP ratings on the 2D worklights make them suitable for both indoor and outdoor applications.

All designed with the professional in mind, for the rigours of on-site use.

150W PORTABLE WORKLIGHTS



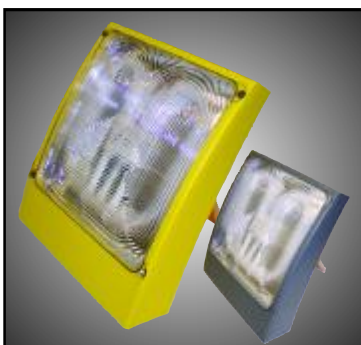
Code	Description	Box Qty	Trade £
FLP150W110V	150w Portable worklight - 110v	6	12.92
FLP150W240V	150w Portable worklight - 240v	6	10.98
	<ul style="list-style-type: none"> Durable construction in safety yellow c/w 1.5m arctic (110v) or HO5RNF (240v) cable and appropriate CEE/BS plug Protective grill Adjustable flood head C/w 500w TH lamp 		
	<ul style="list-style-type: none"> Full carry handle Broad base for added stability Tilt adjustment feature 		

500W PORTABLE WORKLIGHTS



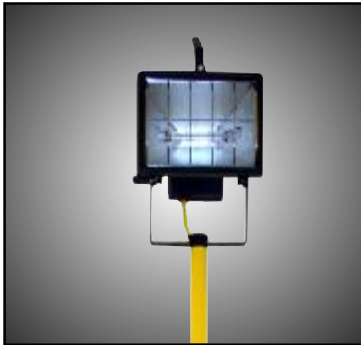
Code	Description	Box Qty	Trade £
FLP500W110V	500w Portable worklight - 110v	6	14.52
FLP500W240V	500w Portable worklight - 240v	6	12.34
	<ul style="list-style-type: none"> Durable construction in safety yellow c/w 1.5m arctic (110v) or HO5RNF (240v) cable and appropriate CEE/BS plug Protective grill Adjustable flood head C/w 500w TH lamp 		
	<ul style="list-style-type: none"> Full carry handle Broad base for added stability Tilt adjustment feature 		

38W 2D WORKLIGHTS



Code	Description	Box Qty	Trade £
WP38W110V	38w 2D Portable worklight - 110v	6	41.88
WP38W240V	38w 2D Portable worklight - 240v	6	36.88
	<ul style="list-style-type: none"> Energy saving Cool touch Complete with 5m suitable cable and plug Complete with 38w DD lamp Multi-function, hanging / freestanding / portable IP44 weatherproof 		

500W TELESCOPIC WORKLIGHTS - 2 IN 1



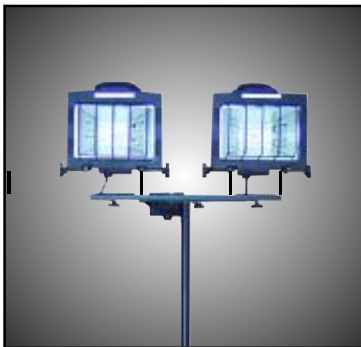
Code	Description	Box Qty	Trade £
FLS5001A110V	500w Telescopic 2 in 1 worklight - 110v	2	33.00
FLS5001A240V	500w Telescopic 2 in 1 worklight - 240v	2	30.60
	<ul style="list-style-type: none"> • Durable construction in safety yellow • c/w 5m arctic (110v) or HO5RNF (240v) cable and appropriate CEE/BS plug • Protective grill & cable storage • Telescopes to around 2m approx • "Umbrella" style safety tripod • C/w 500w TH lamp 		

2 X 500W TELESCOPIC WORKLIGHTS



Code	Description	Box Qty	Trade £
FLS5002A110V	2 X 500w Twin Head telescopic worklight - 110v	2	47.22
FLS5002A240V	2 X 500w Twin Head telescopic worklight - 240v	2	42.44
	<ul style="list-style-type: none"> • Durable construction in safety yellow • c/w 5m arctic (110v) or HO5RNF (240v) cable and appropriate CEE/BS plug • Protective grill & cable storage • Telescopes to around 2m approx • "Umbrella" style safety tripod • C/w 2 x 500w TH lamp 		

4 X 300W MEGA TELESCOPIC WORKLIGHT C/W CARRYCASE



Code	Description	Box Qty	Trade £
FLS1200W110V	4 x 300w MEGA telescopic worklight with case - 110v	1	94.44
FLS1200W240V	4 x 300w MEGA telescopic worklight with case - 240v	1	88.78
	<ul style="list-style-type: none"> • Ultra robust construction • C/w 5m suitable cable and plug • Unique 4 x 300w switching - options of 300w to massive 1200w output. • Telescopes to around 7ft approx • c/w Integral carry case & cable storage • c/w 4 x 300w TH lamps 		

5FT 110V FLUORESCENT TRIPOD



Code	Description	Box Qty	Trade £
FLS58W110V	5ft 58w Fluorescent telescopic worklight - 110v	1	59.86
	<ul style="list-style-type: none"> • Telescoping tripod for easy transportation and storage • IP65 weatherproof luminaire (1 x 58w) • 5m arctic cable and CEE plug • Swivel and tilt adjustment on luminaire • "Umbrella" style safety tripod • c/w 58w 110v fluorescent lamp 		

38W 2D TELESCOPIC WORKLIGHT



Code	Description	Box Qty	Trade \$
FLS38D1A110V	38w 2D Telescopic worklight - 110v	2	80.22
FLS38D1A240V	38w 2D Telescopic worklight - 240v	2	80.58
	<ul style="list-style-type: none"> • Energy saving and cool to touch • "Umbrella" style safety tripod • Extends to over 2m • Complete with 5m suitable cable and plug • Complete with 38w DD lamp • Weatherproof to IP44 		

5FT 110V ANTI CORROSIVE FITTING ONLY



Code	Description	Box Qty	Trade \$
FLX58W110V	5ft 58w Anti Corrosive luminaire - 110v	1	40.04
	<ul style="list-style-type: none"> • IP65 weatherproof luminaire (1 x 58w) • c/w 58w 110v fluorescent lamp 		

25M FESTOON STRINGS



Code	Description	Box Qty	Trade \$
FL25BC	25m 110v festoon string - BC	1	65.00
FL25ES	25m 110v festoon string - ES	1	65.00
	<ul style="list-style-type: none"> • Max 10 x 60w Rough Service GLS • IP44 rated • Complete with CEE plug • Complete with 10 x protective guards • Available in BC or ES • Arctic grade cable • Complete with 60w 110v RS GLS lamps 		

FESTOON GUARDS



Code	Description	Box Qty	Trade \$
FGUARD	Festoon Guard	10	1.90
	<ul style="list-style-type: none"> • Thermoplastic construction • Suitable for use with BC or ES festoon kits • Safety yellow 		

GRIPPER LAMPS



Code	Description	Box Qty	Trade £
HL110V	Heavy duty Gripper lamp - 110v	1	20.56
HL240V	Heavy duty Gripper lamp - 240v	1	19.44

- Heavy duty grip / construction
- Metal Guard and lamp shield
- Complete with 5m cable and plug
- Complete with 60w Rough Service lamp
- IP20 rated

INSPECTION LAMP



Code	Description	Box Qty	Trade £
WLP008	8w fluorescent inspection lamp - 240v	6	8.84

- Versatile inspection lamp
- Cooler running than GLS versions
- Complete with 5m cable and plug
- Complete with 8w T5 lamp
- IP20 rated
- Integral hanging hook